



Goodwin Close

For Sale

\$240,000 - \$275,000*

🛏 1 🚿 1

Monarch Floorplan | 2a St James Court - Blackburn - VIC

🏠 41 m² Floor Area

Monarch Floorplan | Goodwin Close Serviced Apartments

Introducing this beautifully refurbished one-bedroom serviced apartment, located in the heart of our retirement living community. This apartment has undergone a complete refresh, featuring new carpets and paint throughout. Step inside and be greeted by the spacious open plan living area, providing a comfortable and inviting space to relax and entertain. The well-appointed kitchenette boasts quality appliances, allowing you to prepare meals with ease. The bedroom offers a peaceful retreat, complete with built-in robes for ample storage. The modern ensuite/bathroom is stylishly designed and provides all the necessary amenities for your convenience.

Amenities

- 🔄 Close To Facilities
- 🌳 Close to parks
- 🛒 Close to Shops
- 📞 Emergency Call System
- 🏠 Serviced Apartment
- 🚌 Village bus



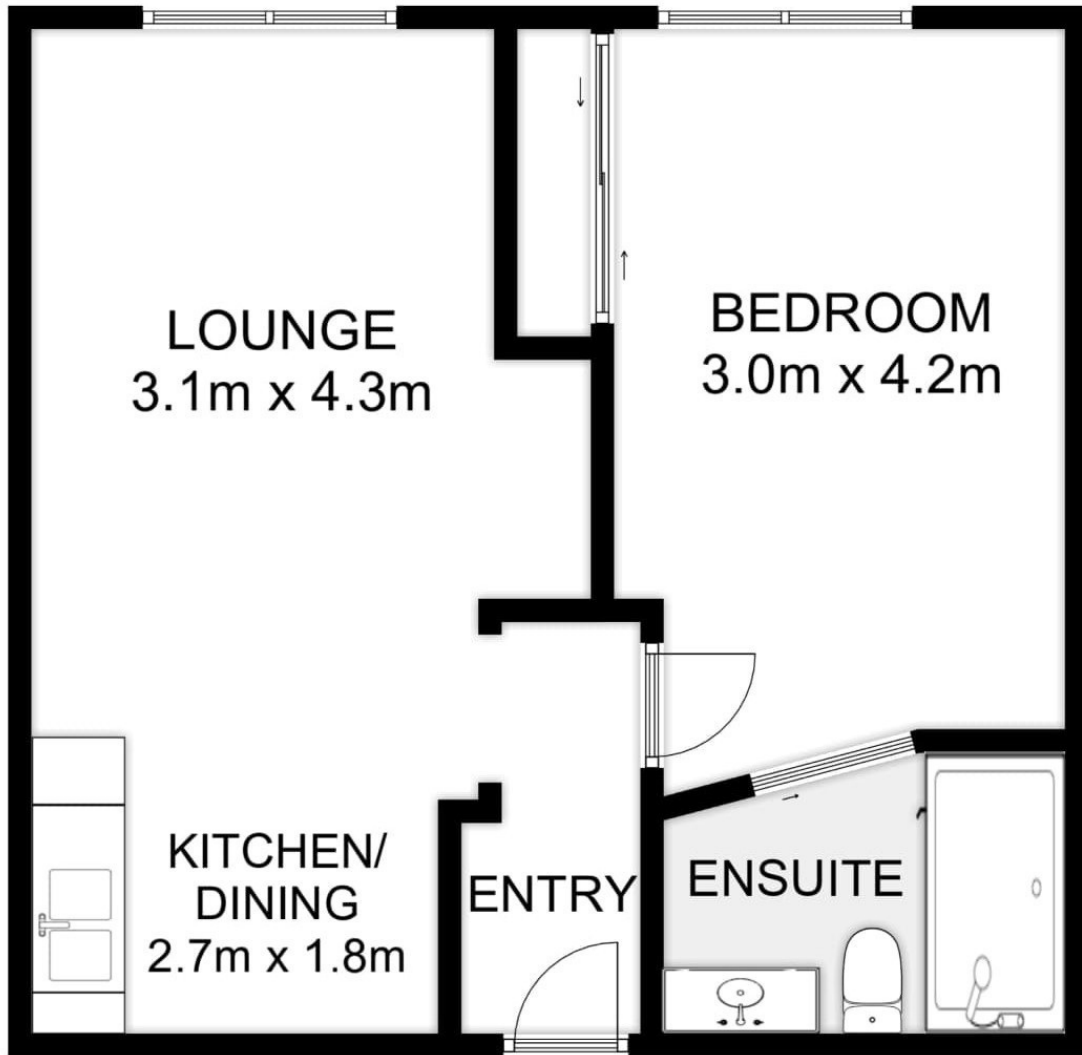
1800 550 550
keyton.com.au

*Photographs are for illustrative purposes. Some images may depict items not provided by Keyton within the units such as furniture and other decorative items.

Monarch Floorplan | 2a St James Court - Blackburn - VIC
Monarch Floorplan

🛏 1 🚿 1

🛏 1 🚿 0 🚿 1 🚿 0



Total Area 41 m²