



Goodwin Close

For Sale

\$240,000 - \$269,000*

 1  1







Apollo Floorplan | 2a St James Court - Blackburn - VIC

 36 m² Floor Area

Apollo Floorplan | Goodwin Close Serviced Apartments

Step into this lovely refreshed one-bedroom serviced apartment and experience a true sense of home. With brand new paint and floor coverings throughout, this residence offers a modern and inviting atmosphere. The open plan living area seamlessly connects with the leafy outdoor courtyard, creating a delightful space to relax or entertain. The well-designed layout features a spacious bedroom with a modern ensuite and a built-in robe, ensuring ample storage space. Enjoy the comfort of a split system air conditioner for cooling and hydronic heating for those cooler months, allowing you to live in comfort year-round.

Amenities

-  Close to parks
-  Close to Shops
-  Emergency Call System
-  Village bus
-  Walk in shower
-  Wardrobe - built in



1800 550 550
[keyton.com.au](https://www.keyton.com.au)

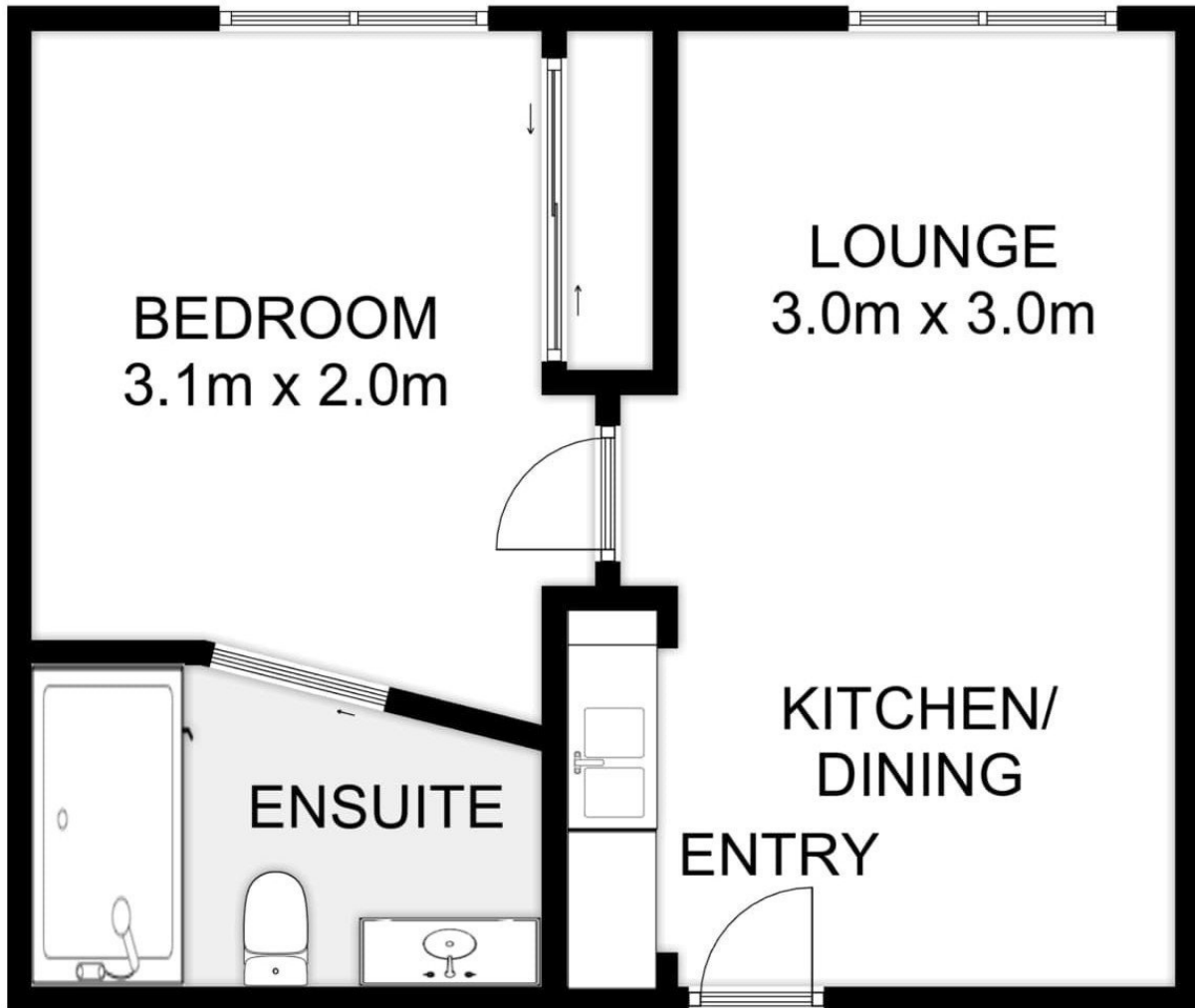
*Photographs are for illustrative purposes. Some images may depict items not provided by Keyton within the units such as furniture and other decorative items.

Apollo Floorplan | 2a St James Court - Blackburn - VIC

🛏 1 🪑 1

Apollo Floorplan

🛏 1 🪑 0 🪴 1 🚿 0



Total Area	36 m ²
------------	-------------------

This is an indicative floor plan that may vary according to home location within the village/resort. The information, dimensions and specifications on this floor plan are believed to be correct but is not guaranteed and may change without notice. Any illustrations are an artist's impression only and subject to change. Keyton gives no warranty concerning the accuracy of the material or information displayed in this brochure and all such warranties (whether implied or otherwise) are excluded to the extent permitted by law. Prospective purchasers should make their own enquiries.

1800 550 550
keyton.com.au