



## Fiddlers Green

For Sale

\$195,000

🛏 1 🪑 1

Maple Floorplan | 57 Gloucester Avenue - Berwick - VIC

🏠 40 m<sup>2</sup> Floor Area

### Maple Floorplan | Serviced Apartments

This modern light and bright serviced apartment boasts fresh paint and carpeting and an open plan layout, with direct access to an outdoor patio

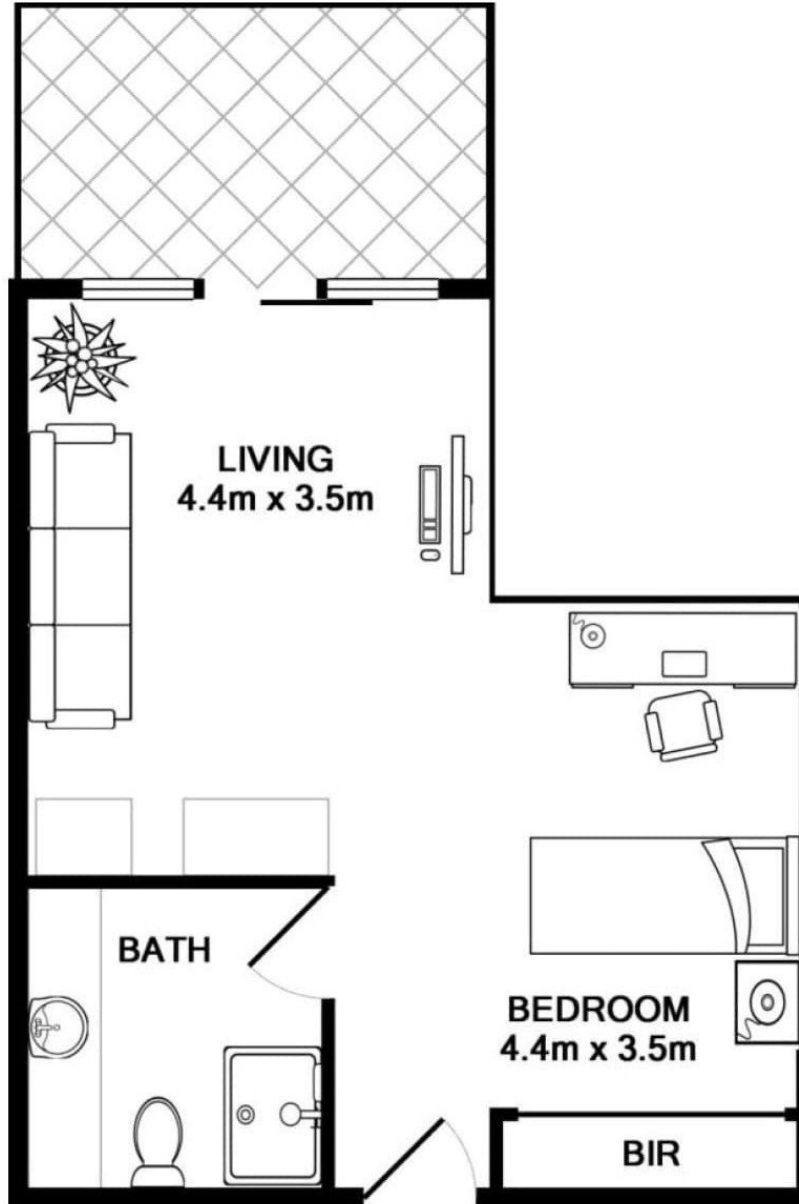


1800 550 550  
keyton.com.au

\*Photographs are for illustrative purposes. Some images may depict items not provided by Keyton within the units such as furniture and other decorative items.

Maple Floorplan | 57 Gloucester Avenue - Berwick - VIC

 1  1



Total Area	40 m <sup>2</sup>
------------	-------------------

This is an indicative floor plan that may vary according to home location within the village/resort. The information, dimensions and specifications on this floor plan are believed to be correct but is not guaranteed and may change without notice. Any illustrations are an artist's impression only and subject to change. Keyton gives no warranty concerning the accuracy of the material or information displayed in this brochure and all such warranties (whether implied or otherwise) are excluded to the extent permitted by law. Prospective purchasers should make their own enquiries.

1800 550 550  
[keyton.com.au](http://keyton.com.au)