



Highvale

Under Offer

\$300,000 - \$310,000*

 1  1







Grande Floorplan | 42-60 Capital Avenue - Glen Waverley - VIC

 55 m² Floor Area

Grande Floorplan | Highvale Serviced Apartments

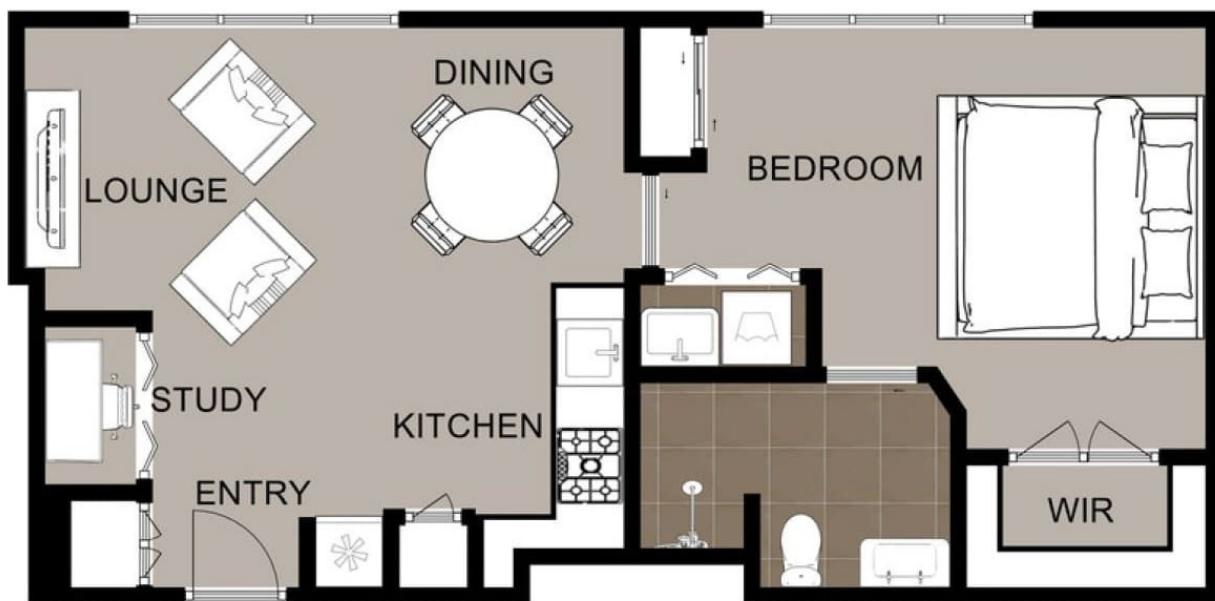
Welcome to a new way to have a placid and serene lifestyle in the compact and comfortable Grande floorplan. Don't miss this opportunity to live in one of our Grande apartments at Highvale

Amenities

-  Balcony/Patio/Terrace
-  Close to Parklands
-  Close to Shops
-  Close to Transport
-  Emergency Call System
-  Gym

Grande Floorplan | 42-60 Capital Avenue - Glen Waverley - VIC

 1  1



Total Area	55 m ²
------------	-------------------

This is an indicative floor plan that may vary according to home location within the village/resort. The information, dimensions and specifications on this floor plan are believed to be correct but is not guaranteed and may change without notice. Any illustrations are an artist's impression only and subject to change. Keyton gives no warranty concerning the accuracy of the material or information displayed in this brochure and all such warranties (whether implied or otherwise) are excluded to the extent permitted by law. Prospective purchasers should make their own enquiries.

1800 550 550
keyton.com.au