



Lexington Gardens

For Sale

\$340,000 - \$345,000*

🏠 2 🛏 1 🚿 1

Columbine Floorplan | 114 Westall Road - Springvale - VIC

📏 54 m² Floor Area

COLUMBINE FLOORPLAN

The Columbine floorplan at Lexington Gardens is a two bedroom apartment. Within the Columbine floorplan, enjoy a generous, fully equipped kitchen in an open-plan living setting. The fully equipped, spacious bathroom is adjacent to the kitchen. This home type has a European laundry for convenience. The bedrooms offer large walk in robes for ample storage.



1800 550 550
keyton.com.au

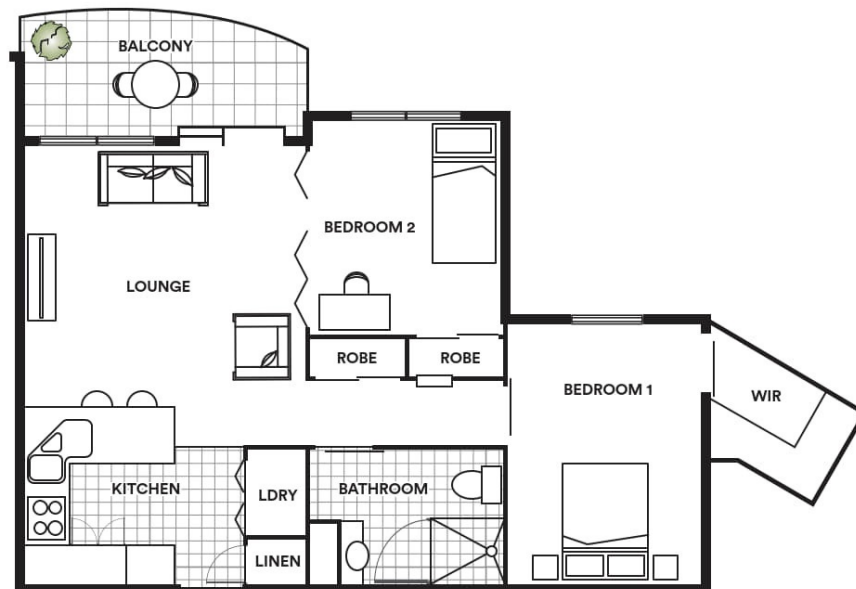
*Photographs are for illustrative purposes. Some images may depict items not provided by Keyton within the units such as furniture and other decorative items.

Columbine Floorplan | 114 Westall Road - Springvale - VIC

 2  1  1

Columbine

 2  1  1*



Area	m ²
Total	54-57

This is an indicative floor plan that may vary according to home location within the village/resort. The information, dimensions and specifications on this floor plan are believed to be correct but is not guaranteed and may change without notice. Any illustrations are an artist's impression only and subject to change. Keyton gives no warranty concerning the accuracy of the material or information displayed in this brochure and all such warranties (whether implied or otherwise) are excluded to the extent permitted by law. Prospective purchasers should make their own enquiries. *Car Parking allocated based on availability.

1800 550 550
keyton.com.au

TDW13907 09/23