



## Meadowvale

For Sale

\$230,000 - \$250,000

2 1

Southernngum Floorpla | 12-26 Eagle Drive - Pakenham - VIC

73 m<sup>2</sup> Floor Area

### Serviced Apartment | Southernngum Floorplan

The Southernngum floorplan is a generously sized 73 square metres serviced apartment at Meadowvale. The Southernngum floorplan is the perfect apartment for guests and entertaining. In addition, the 2 spacious bedrooms have built-in robes along with a linen storage, providing ample space for your laundry and other materials. Furthermore, the Southernngum apartment comes with a fully equipped kitchenette adjacent to the generous sized living and dining area. Depending on the home you choose (ground level or upper), the Southernngum floorplan offers magnificent views over the lovely, manicured gardens of Meadowvale and/or the other beautiful natural scenery within the village grounds.

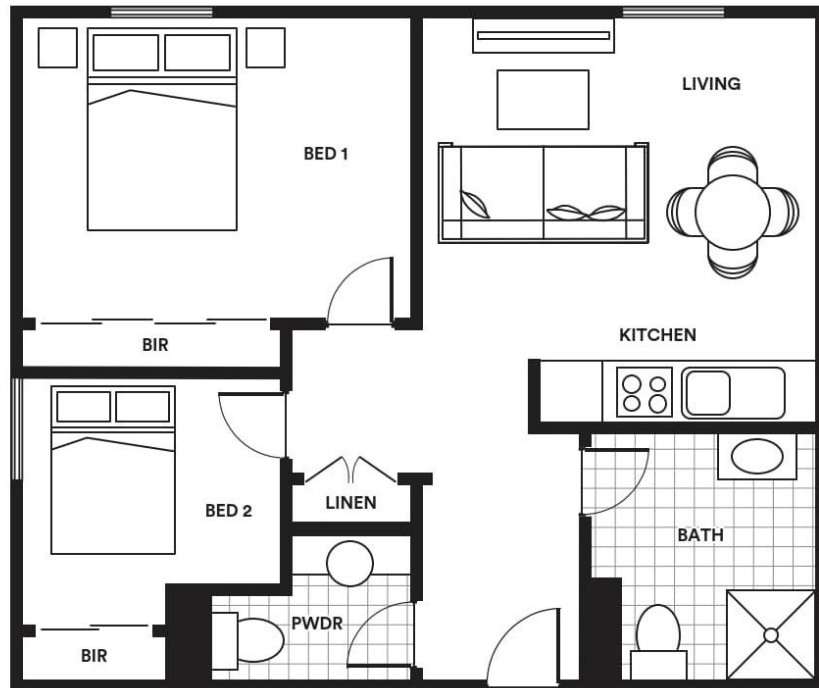


1800 550 550  
keyton.com.au

\*Photographs are for illustrative purposes. Some images may depict items not provided by Keyton within the units such as furniture and other decorative items.

Southernngum Floorpla | 12-26 Eagle Drive - Pakenham - VIC

 2  1



Area	m <sup>2</sup>
Total	73

This is an indicative floor plan that may vary according to home location within the village/resort. The information, dimensions and specifications on this floor plan are believed to be correct but is not guaranteed and may change without notice. Any illustrations are an artist's impression only and subject to change. Keyton gives no warranty concerning the accuracy of the material or information displayed in this brochure and all such warranties (whether implied or otherwise) are excluded to the extent permitted by law. Prospective purchasers should make their own enquiries.