



Evelyn Ridge

For Sale

\$ 720,000

🏠 2 🛏 1.5 🚗 1

48 | 120 Clegg Road - Mount Evelyn - VIC

📏 122 m² Floor Area

Updated Villa with Stunning Yarra Views and Modern Comforts

Nestled in the peaceful semi-rural setting of Evelyn Ridge Village, this beautifully updated villa presents a wonderful opportunity for those seeking a modern and comfortable retirement. The heart of this home is its spacious open-plan living area, accentuated by high ceilings and offering panoramic views of the Yarra Ranges. The modern kitchen, equipped with quality appliances, opens up to a private courtyard, allowing for family and friends gatherings or quiet time. The home is complemented by a European laundry and 1.5 contemporary bathrooms, ensuring convenience and functionality. Additional features include a single car garage with internal access, as well as reverse cycle air conditioning for year-round comfort.

Amenities

- 🔄 Cul-de-sac
- 🧼 Dishwasher
- ↑ High Ceilings
- 💧 Rain Water Tank
- ☀️ Skylight
- 🏞 View

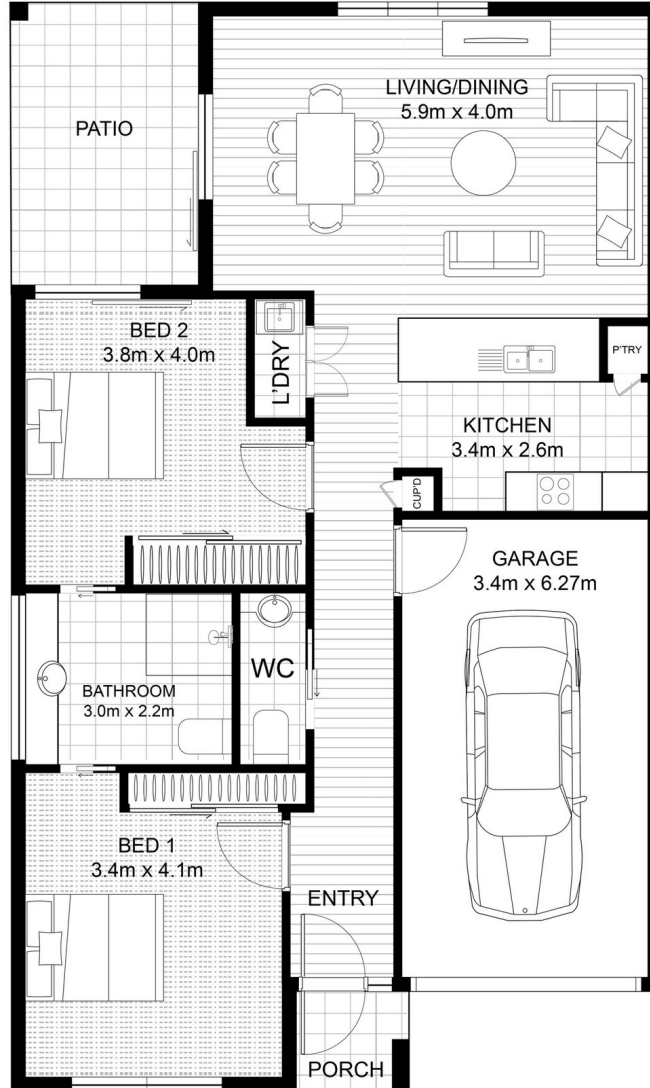


1800 550 550
keyton.com.au

*Photographs are for illustrative purposes. Some images may depict items not provided by Keyton within the units such as furniture and other decorative items.

48 | 120 Clegg Road - Mount Evelyn - VIC

 2  1.5  1



Internal Living	110m ²
Porch	2m ²
Patio	10m ²
Total Area	122m²

This is an indicative floor plan that may vary according to home location within the village/resort. The information, dimensions and specifications on this floor plan are believed to be correct but is not guaranteed and may change without notice. Any illustrations are an artist's impression only and subject to change. Keyton gives no warranty concerning the accuracy of the material or information displayed in this brochure and all such warranties (whether implied or otherwise) are excluded to the extent permitted by law. Prospective purchasers should make their own enquiries.