



Classic Residences

For Sale

\$ 875,000

🏠 2 🛏️ 1.5

35 Terrace | 3 Brewer Road - Brighton East - VIC

📏 91.4 m² Floor Area

Light and Bright, Contemporary Apartment with Spacious Balcony Retreat

This delightful north-facing, two-bedroom, 1.5-bathroom terrace apartment at Classic Residences Brighton offers an exceptional sense of space and light. With a sunny private balcony and a generous open-plan layout, the home features a modern kitchen with stainless steel appliances, built-in storage, and a brand-new bathroom plus a powder room. Both bedrooms come with built-in robes, and comfort is guaranteed with ducted air conditioning and heating. Perfectly located to enjoy all the fabulous community amenities, this home provides an inviting and stylish retreat.

Amenities

- 🏠 Balcony
- 🧼 Dishwasher
- 🌬️ Ducted cooling
- 🔥 Ducted heating
- 📺 Modern Appliances
- 🍳 Modern Kitchen

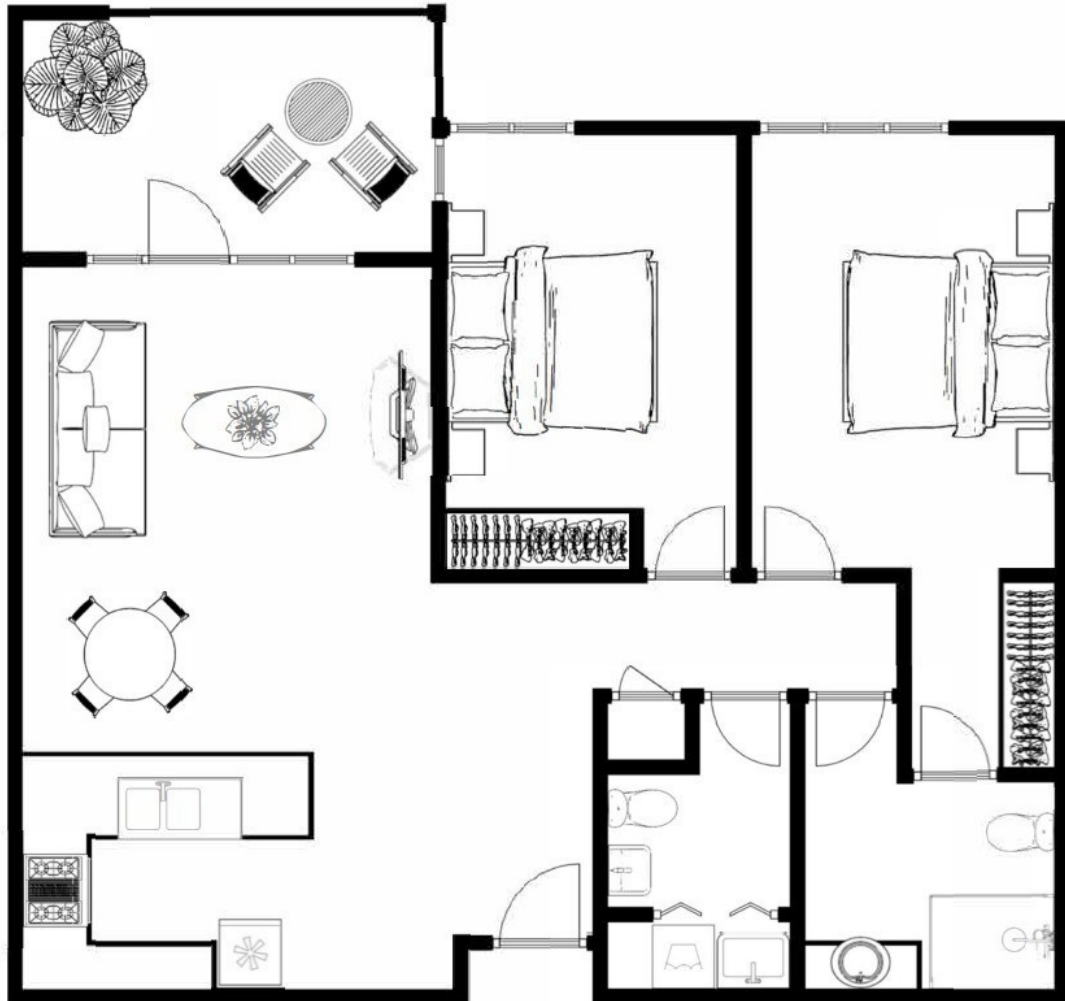


1800 550 550
keyton.com.au

*Photographs are for illustrative purposes. Some images may depict items not provided by Keyton within the units such as furniture and other decorative items.

35 Terrace | 3 Brewer Road - Brighton East - VIC

🏠 2 📏 1.5



Internal Living:	91.0 m ²
External:	0.0 m ²
Total Area:	91.0 m²

This is an indicative floor plan that may vary according to home location within the village/resort. The information, dimensions and specifications on this floor plan are believed to be correct but is not guaranteed and may change without notice. Any illustrations are an artist's impression only and subject to change. Keyton gives no warranty concerning the accuracy of the material or information displayed in this brochure and all such warranties (whether implied or otherwise) are excluded to the extent permitted by law. Prospective purchasers should make their own enquiries.