



Isabella Gardens

Under Offer

\$ 760,000

🛏️ 2 🚪 1 🚗 2

102 | 4 Azalea Circuit - Isabella Plains - ACT

📏 102.6 m² Floor Area

Rare Two-Bedroom Villa with Double Garage at Isabella Gardens

Experience exceptional living in this two-bedroom villa at Isabella Gardens, perfectly positioned opposite the clubhouse. This home features an open-plan living area with high ceilings, a generously sized kitchen with stainless steel appliances, and bedrooms with built-in robes. Freshly painted with new carpets, it offers modern comfort with reverse cycle air conditioning. Enjoy the privacy of a fully fenced courtyard and rear garden, plus the convenience of a separate laundry room and double lockup garage. Don't miss your chance to view it!

Amenities

- 📖 Close to village facilities
- 🛡️ Covered patio
- 🧼 Dishwasher
- 🚗 Double Lock Up Garage With Internal Access
- 🚧 Fully Fenced
- ⬆️ High Ceilings

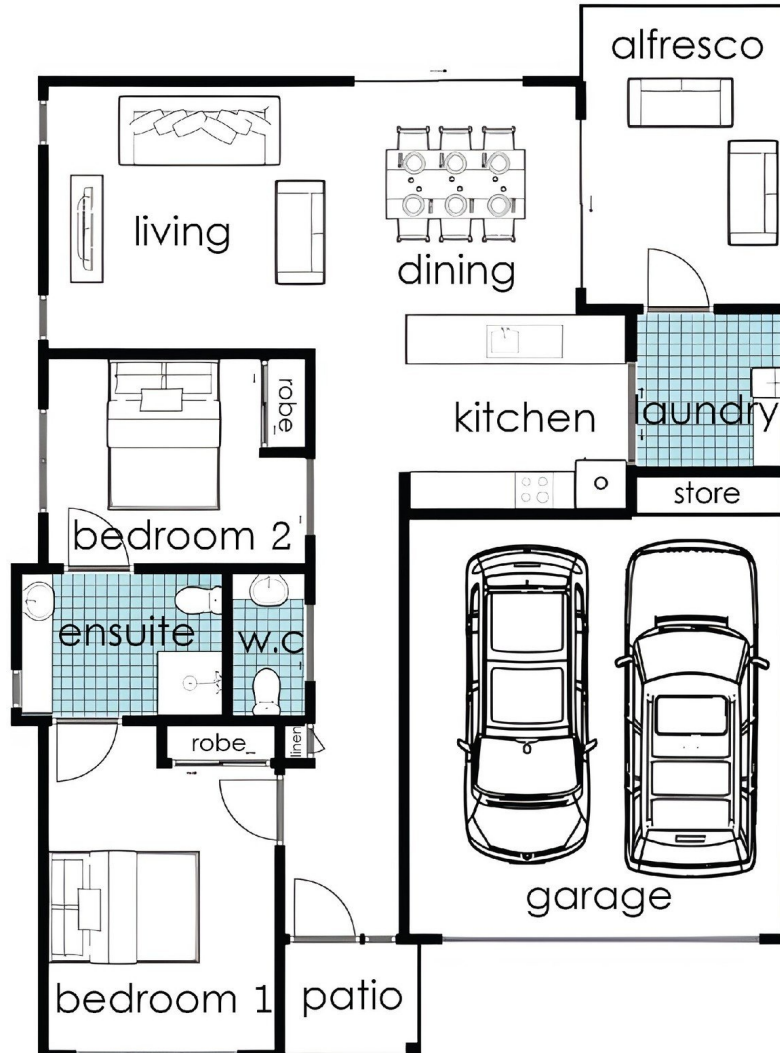


1800 550 550
keyton.com.au

*Photographs are for illustrative purposes. Some images may depict items not provided by Keyton within the units such as furniture and other decorative items.

102 | 4 Azalea Circuit - Isabella Plains - ACT

 2  1  2



Internal Living	103 m ²
Garage	36 m ²
Alfresco	13 m ²
Total Area	152 m²

This is an indicative floor plan that may vary according to home location within the village/resort. The information, dimensions and specifications on this floor plan are believed to be correct but is not guaranteed and may change without notice. Any illustrations are an artist's impression only and subject to change. Keyton gives no warranty concerning the accuracy of the material or information displayed in this brochure and all such warranties (whether implied or otherwise) are excluded to the extent permitted by law. Prospective purchasers should make their own enquiries.