



Waverley Country Club

For Sale

\$ 1,200,000

🛏️ 2 🚿 1.5 🚗 2

1 Golf Drive | 60 Bergins Road - Rowville - VIC

📏 141 m² Floor Area

Elegant Home with Private Garden and Versatile Living Spaces

This spacious unit in Waverley Country Club offers privacy and charm, highlighted by high ceilings, fresh paint, and new floor coverings. Enjoy the flexibility of two living areas, with the option to create a guest bedroom or third bedroom. The thoughtfully designed "Peninsula" home features a galley kitchen with stone benchtops, leading to an internal laundry. With a master ensuite, powder room, and split system heating and cooling, this home combines comfort and style. A double garage with internal entry to the home adds convenience, and the lush garden views complete the picture.

Amenities

- 🔄 Cul-de-sac
- 🧼 Dishwasher
- 🏠 Double Lock Up Garage With Internal Access
- 🛋️ Flooring - tiles
- 🌿 Fully Fenced
- ⬆️ High Ceilings

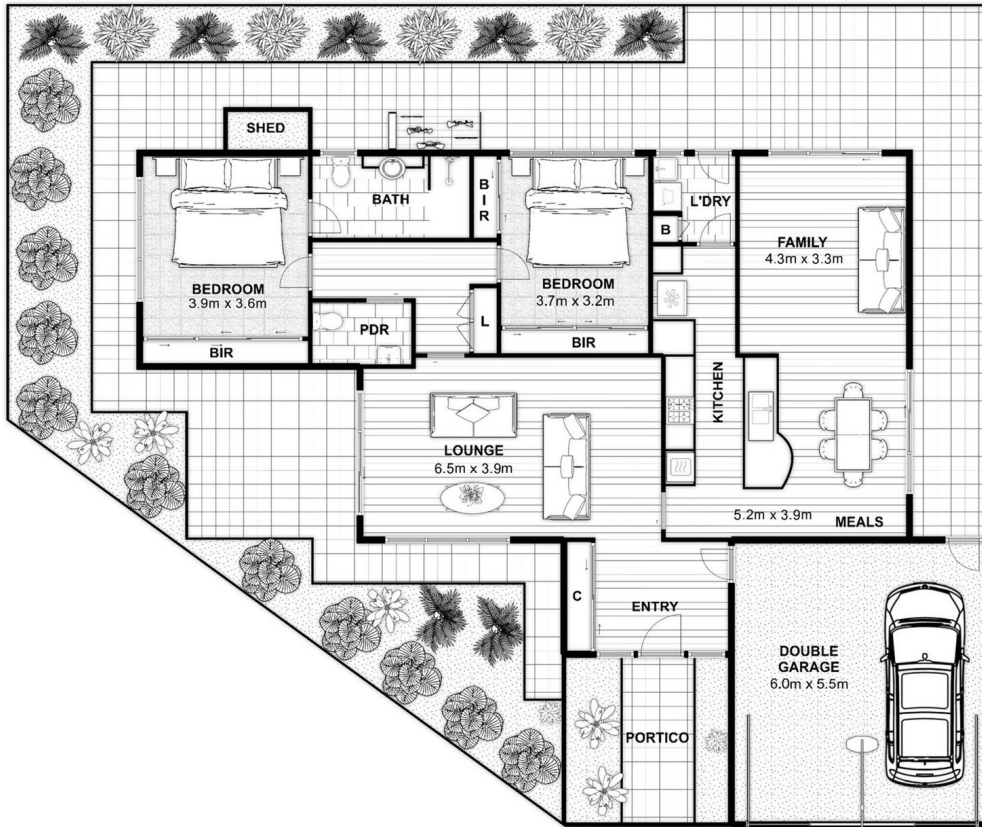


1800 550 550
keyton.com.au

*Photographs are for illustrative purposes. Some images may depict items not provided by Keyton within the units such as furniture and other decorative items.

1 Golf Drive | 60 Bergins Road - Rowville - VIC

 2  1.5  2



Total Area: 178 m²